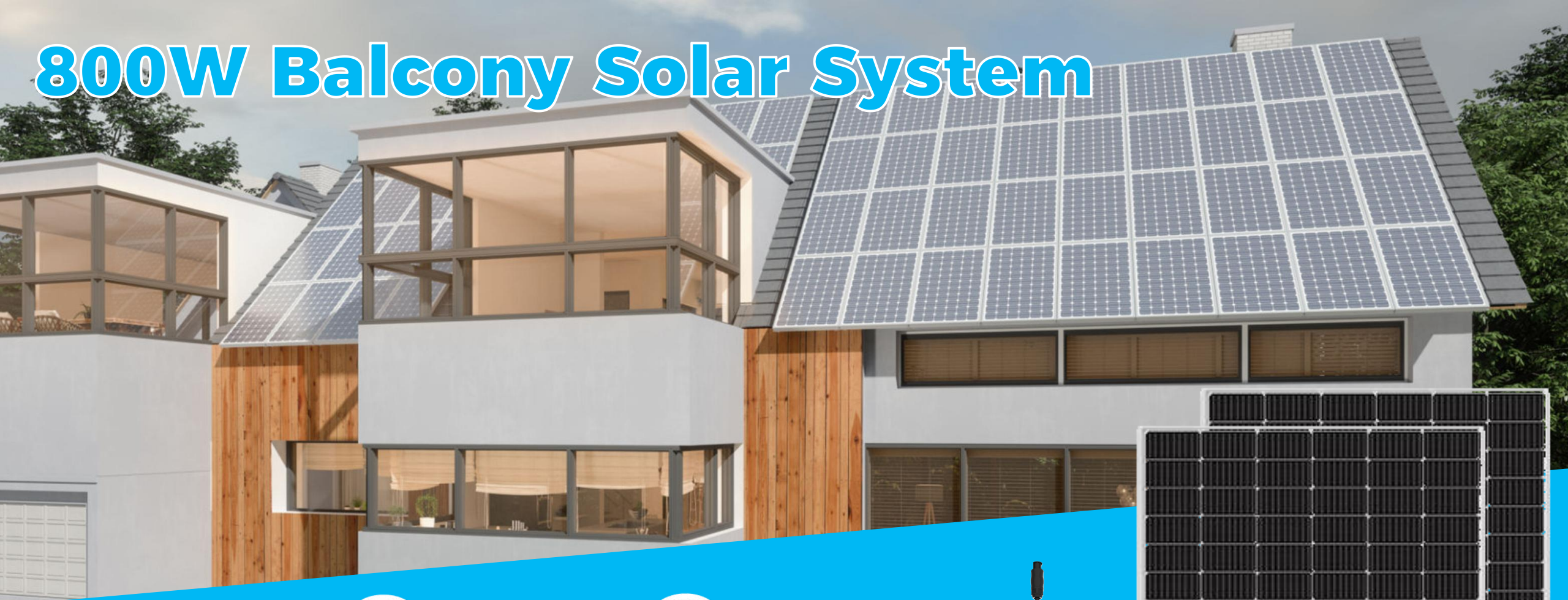


800W Balcony Solar System



Easy to Install



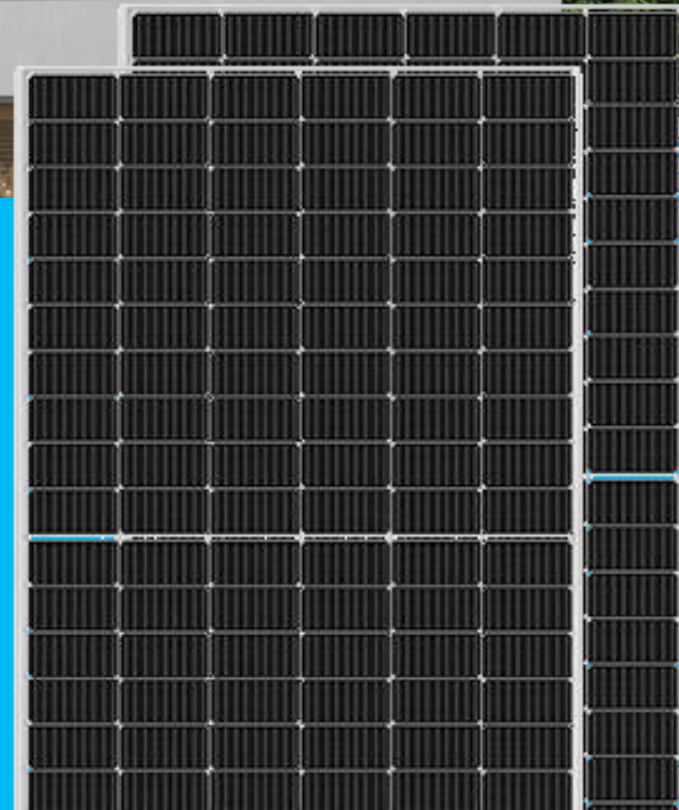
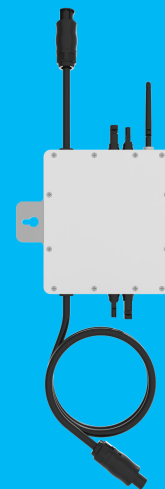
More Power



Long Lifespan



Low Cost



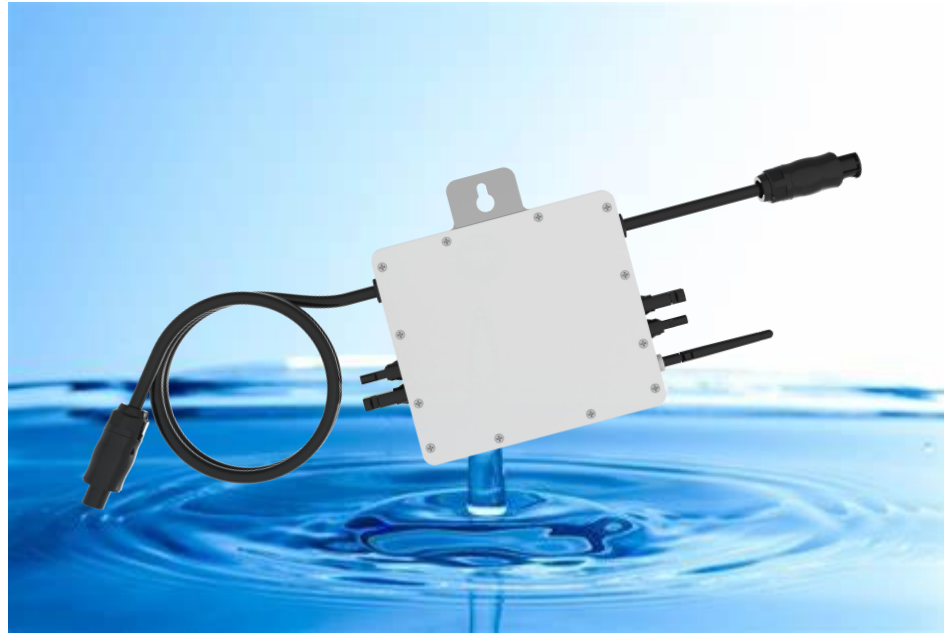
WHY CHOOSING AC PANEL?

Simple

For installation, it's just a simple "Plug & Play", there is no more headache about complicated wiring and configuration between DC to DC and then DC to AC.

Reliable

Our AC Panel is a perfect combination with high efficiency solar panel(IP68) and world's thinnest microinverter(thickness 26mm) with IP67 waterproof enclosure. ensuring 25-year non-stop working lifetime.



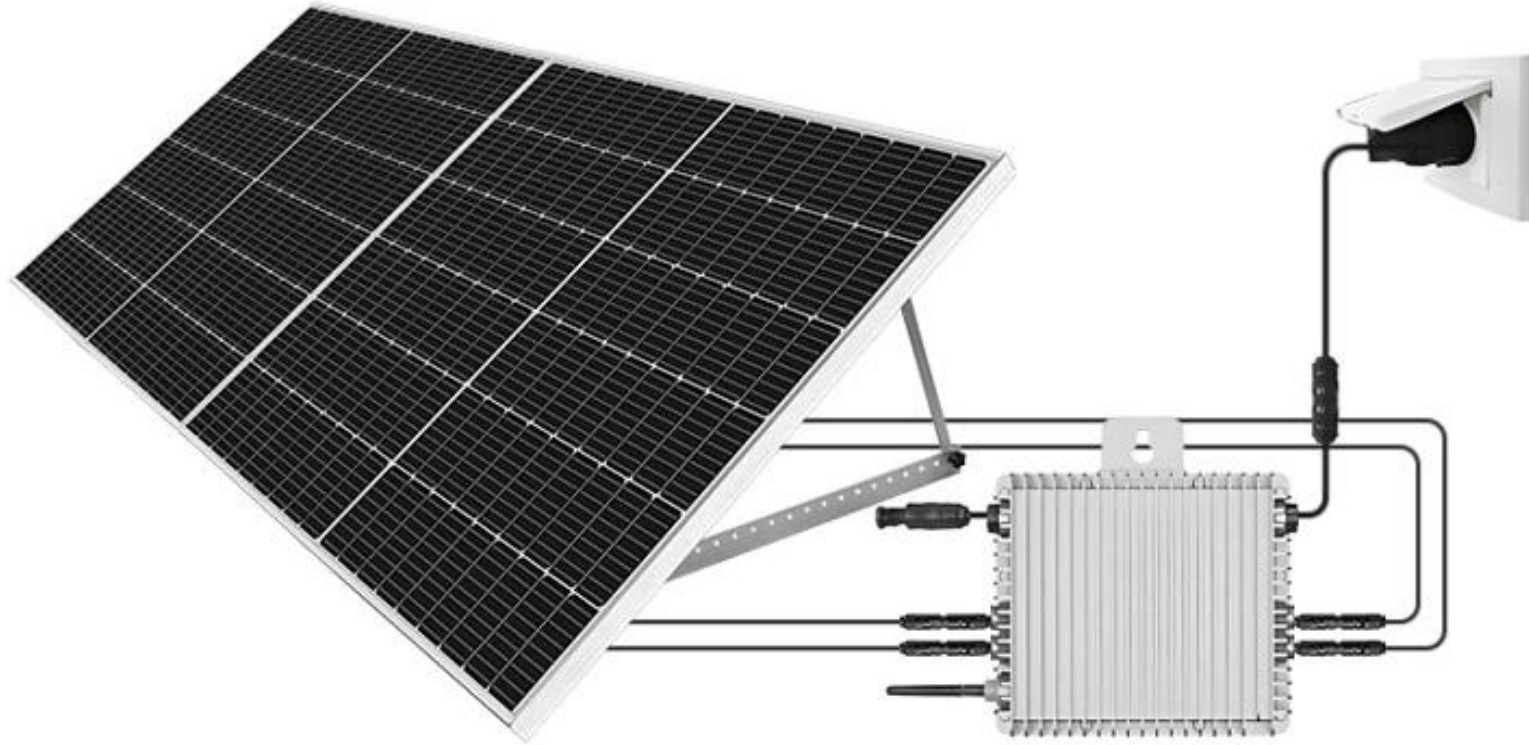
Powerful

An AC panel starts working at 20Vdc to produce continuous power under low light condition, and its modular MPPT harvests 20% more power.

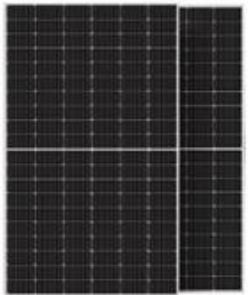
Smart

Our AC panel is not only a solar panel, it's also an independent solar plant itself, which takes the advantage of module-level monitoring platform and shows power output and operation parameters by a smart device in real time.

800W Solar System



Packing List



PV Panels 2 PCs



DEYE Micro Inverter 800W 1 PC



Mounting Bracket 2 Sets



5M AC Cable with Schuko Plug x 1

SOLAR PANEL ADVANTAGE



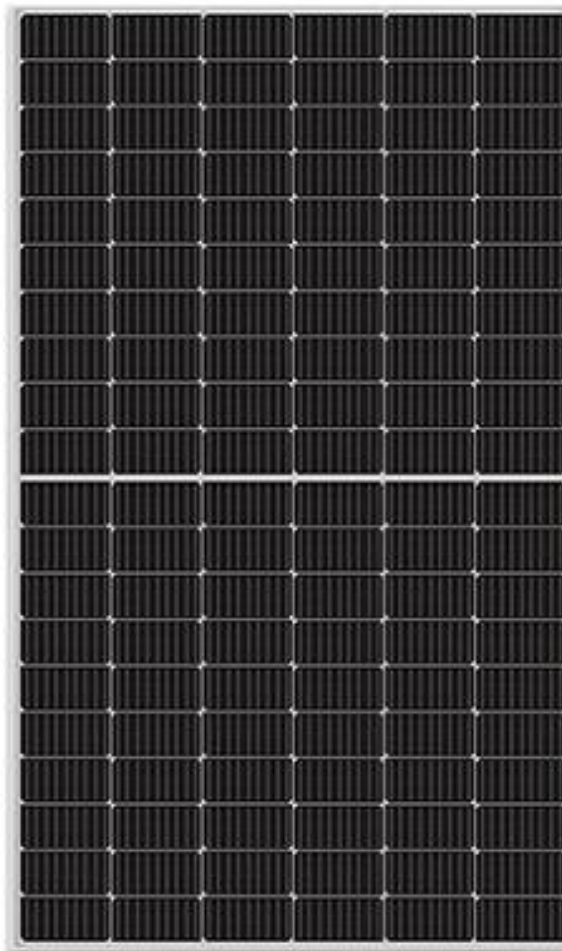
Ultra-high Efficiency



Lowest BOS Cost & LCOF



Outstanding Low
Light Performance



Premium Reliability

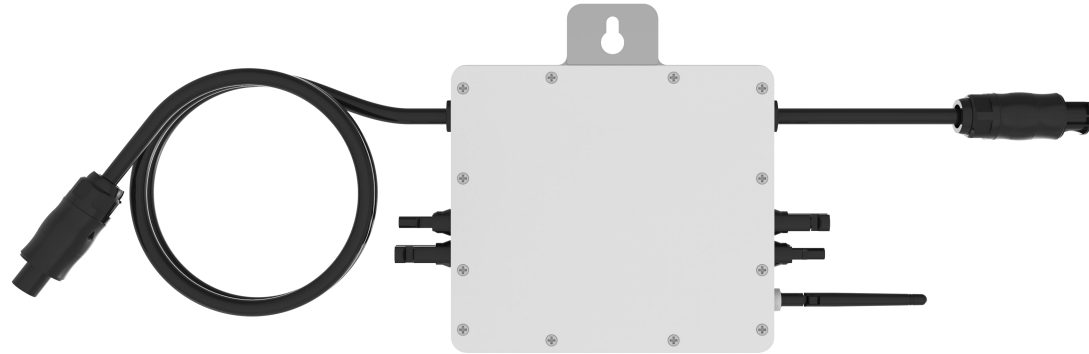


100% EL Testing



Adapt to Bad Weather
& the Environment

MICRO INVERTER ADVANTAGE



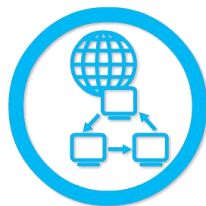
Support Reactive Power Compensation



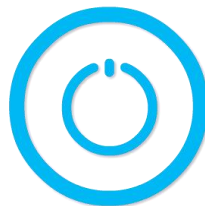
IP67, 10 Year Warranty



2 MPPT, Module Level Monitoring



PLC/Zigbee/ Wi-Fi Communication



Rapid Shutdown Function

| | |
|--|--|
| Model | SUN800G3-EU-230 |
| DC Input | |
| Recommended Input Power (STC) | 210-500W (2 Pieces) |
| Maximum Input DC Voltage | 60V |
| MPPT Voltage Range | 25-55V |
| Operating DC Voltage Range | 20-60V |
| Max. DC Short Circuit Current | 2 × 19.5A |
| Max. Input Current | 2 × 13A |
| Number of MPPT / Strings per MPPT | 2 / 1 |
| AC Output | |
| Rated Output Power | 800W |
| Rated Output Current | 3.5A |
| Nominal Voltage / Range (Varies with Grid Standards) | 230V / 184-265V |
| Nominal Frequency / Range | 50 / 60Hz |
| Extended Frequency / Range | 45-55Hz / 55-65Hz |
| Power Factor | >0.99 |
| Maximum Units per Branch | 6 |
| Efficiency | |
| CEC Weighted Efficiency | 0.95 |
| Peak Inverter Efficiency | 0.965 |
| Static MPPT Efficiency | 0.99 |
| Night Time Power Consumption | 50mW |
| General | |
| Operating Temperature Range | -40-65°C |
| Dimension (W x H x D) | 212 × 230 × 40 mm (Without Mounting Bracket and Cable) |
| Weight | 3.15KG |
| Cooling | Natural Convection |
| Protection Degree | IP67 |
| Warranty | 10 Years |
| Compatibility | Compatible with 60-72 Cell PV Modules |
| Communication | Power Line / Wi-Fi / Zigbee |
| Certifications and Standards | |
| Grid Connection Standard | EN50549-1, VDE0126-1-1, VDE 4105, ABNT NBR 16149, ABNT NBR 16150, ABNT NBR 62116, RD1699, UNE 206006 IN, UNE 206007-1 IN, IEEE1547 |
| Safety EMC / Standard | UL 1741, IEC62109-1/-2, IEC61000-6-1, IEC61000-6-3, IEC61000-3-2, IEC61000-3-3 |

AC MODULE SPECS

| ELECTRICAL CHARACTERISTICS | | |
|--|---|---------|
| Testing Condition | STC | NMOT |
| Maximum Power (Pmax/W) | 400 | 298 |
| Operating Voltage (Vmpp/V) | 31.05 | 29.0 |
| Operating Current (Impp/A) | 12.89 | 10.30 |
| Open-Circuit Voltage (Voc/V) | 37.00 | 34.8 |
| Short-Circuit Current (Isc/A) | 13.78 | 11.11 |
| Module Efficiency (%) | 20.50 | |
| MECHANICAL CHARACTERISTIC | | |
| Solar Cell | Monocrystalline 182*182mm | |
| No. of Cells | 108 (6*18) | |
| Module Dimensions | 1722*1134*30mm (67.80*44.65*1.18inches) | |
| Weight | 21.5kg (47.4lbs.) | |
| Front Glass | 3.2mm AR Coating Tempered Glass | |
| Frame | Anodized Aluminium Alloy | |
| Junction Box | IP68, 3 Bypass Diodes | |
| Output Cables | 4mm ² (IEC), 12AWG(UL) | |
| Connectors | T01/LJQ-3-CSY/MC4/MC4-EVO2 | |
| APPLICATION CONDITIONS | | |
| Maximum System Voltage | 1000V/1500V/DC | |
| Operating Temperature | -40°C~+85°C | |
| Maximum Series Fuse | 20A | |
| Safety Protection Class | Class II | |
| Mechanical Load (Front side) | 5400Pa | |
| Mechanical Load (Back side) | 2400Pa | |
| TEMPERATURE CHARACTERIST | | |
| Temperature Coefficient of Pmax | -0.35%/°C | |
| Temperature Coefficient of Voc | -0.26%/°C | |
| Temperature Coefficient of Isc | +0.048%/°C | |
| Nominal Module Operating Temperature(NMOT) | 43±2°C | |
| PACKING CONFIGURATION | | |
| Pieces Per Pallet | 36 | 36(USA) |
| Pieces Per Container(40'HQ) | 936 | 828 |

I-V CURVE

